

# HOGEBUILT

The Ultimate Finish for Trucks™

®



[HOGEBUILT.COM](http://HOGEBUILT.COM)



# Table of Contents

## PAGE DESCRIPTION

## PAGE

|   |    |
|---|----|
| Table of Contents & Placing Orders      | 1  |
| Mission Statement                       | 2  |
| Quarter Fender Premium Option Kits      | 3  |
| Quarter Fender Mid-Grade Option Kits    | 7  |
| Quarter Fender Custom Mounting Options  | 9  |
| Single Axle Fenders                     | 11 |
| Half Tandem Fenders                     | 13 |
| Half Tandem Custom Mounting Options     | 15 |
| Full Tandem Fenders                     | 17 |
| Tear Drop & Flanged Full Tandem Fenders | 19 |
| Full Tandem Custom Mounting Options     | 21 |
| Mounting Components                     | 23 |
| Top Flaps, Grilles & Flap Weights       | 24 |
| Hogebuilt Online                        | 25 |
| Claims, Returns & Warranty Information  | 26 |



### CALL HOGEBUILT

800-421-1589



### FAX HOGEBUILT

800-421-1589



### EMAIL HOGEBUILT

[sales@hogebuilt.com](mailto:sales@hogebuilt.com)

[customerservice@hogebuilt.com](mailto:customerservice@hogebuilt.com)



### ONLINE HOGEBUILT

[hogebuilt.com](http://hogebuilt.com)

## PLACING ORDERS

- E-MAIL order details to [customerservice@hogebuilt.com](mailto:customerservice@hogebuilt.com)
- FAX order details to our Customer Service Team: **800-421-1589**
- Contact our Customer Service Team Leader: **800-421-1589**
- Order must define any unique handling, shipping or processing requirements.
- Minimum order is \$250.

### FREIGHT POLICY

- All orders are FOB Goodlettsville, TN 37072
- COD orders are not accepted.
- Prepaid freight is available on orders exceeding \$3,500 in product value to customers in good standing (1 order/ 1 destination in the continental U.S.).
- Prepaid Freight carrier and routing is at Hogebuilt's discretion.

# HOGEBUILT

## The Ultimate Finish for Trucks

Hogebuilt's mission is to produce the best-looking quality stainless steel fenders in the trucking industry; and to achieve The Ultimate Finish for Trucks! Hogebuilt entered the heavy-duty truck market in 1973 by introducing the very first 27", 30" and 34" quarter fender options produced in a 304 stainless steel with a mirror finish and our unique three inch side flange. Our side flange is the longest in the industry and gives Hogebuilt products the sleek look that our customers desire. To complement its line of fenders, Hogebuilt was the first in the industry to develop a complete line of unique suspension specific mounting brackets. At this time, we have all models to choose from, filling the needs of all major truck manufacturers.

Hogebuilt remains the recognized leader in the manufacturing of premium quality truck and trailer spray suppression systems over these past 70 years. We now offer a complete line of quarter, single, tandem and half-tandem fenders manufactured of premium 304 mirror finish stainless steel for a lasting image. Hogebuilt has added a mid grade line of fenders produced in a 430 stainless steel with a mirror shine finish. Our engineered custom brackets integrate the fenders with the suspension system for sustained reliability. All of our Hogebuilt fenders are handcrafted in the USA.

Hogebuilt quarter fenders and custom brackets are factory installed options on select trucks for Peterbilt and Kenworth factories.

Contact your local Chrome Shop, Peterbilt or Kenworth dealer for genuine Hogebuilt products!



# Quarter Fender Premium Option Kits

304 Stainless Steel | 16 Gauge Perfect Mirror Finish



**Q124**  
**24" Quarter**  
**Fender Kit**

| Part No. | Size               | Install Style | Wt.               | Description                               |
|----------|--------------------|---------------|-------------------|---|
| Q124     | 24"<br>28" Overall | Triangle Arm  | 40 lbs.<br>(pair) | 304 SS 16 ga.<br>Perfect Mirror<br>Finish |

## Kit Includes

|            |                                      |
|------------|--------------------------------------|
| (2) MF124  | 24" Fenders                          |
| (2) MQ2000 | Mount Brackets - 304 Stainless Steel |
| (2) F - 15 | Vinyl Hogebuilt Top Flap             |
| (2) 1538SS | Clamps - Stainless Steel             |

| Part No. | Size               | Install Style | Wt.               | Description                               |
|----------|--------------------|---------------|-------------------|---|
| Q127     | 27"<br>31" Overall | Triangle Arm  | 44 lbs.<br>(pair) | 304 SS 16 ga.<br>Perfect Mirror<br>Finish |

## Kit Includes

|            |                                      |
|------------|--------------------------------------|
| (2) MF127  | 27" Fenders                          |
| (2) MQ2000 | Mount Brackets - 304 Stainless Steel |
| (2) F - 15 | Vinyl Hogebuilt Top Flap             |
| (2) 1538SS | Clamps - Stainless Steel             |

**Q127**  
**27" Quarter**  
**Fender Kit**



**Q130**  
**30" Quarter**  
**Fender Kit**

| Part No. | Size               | Install Style | Wt.               | Description                               |
|----------|--------------------|---------------|-------------------|---|
| Q130     | 30"<br>34" Overall | Triangle Arm  | 48 lbs.<br>(pair) | 304 SS 16 ga.<br>Perfect Mirror<br>Finish |

## Kit Includes

|            |                                      |
|------------|--------------------------------------|
| (2) MF130  | 30" Fenders                          |
| (2) MQ2000 | Mount Brackets - 304 Stainless Steel |
| (2) F - 15 | Vinyl Hogebuilt Top Flap             |
| (2) 1538SS | Clamps - Stainless Steel             |

| Part No. | Size               | Install Style | Wt.               | Description                               |
|----------|--------------------|---------------|-------------------|---|
| Q134     | 34"<br>38" Overall | Triangle Arm  | 50 lbs.<br>(pair) | 304 SS 16 ga.<br>Perfect Mirror<br>Finish |

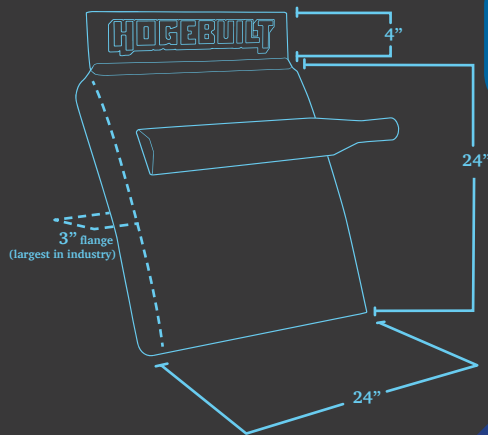
## Kit Includes

|            |                                      |
|------------|--------------------------------------|
| (2) MF134  | 34" Fenders                          |
| (2) MQ2012 | Mount Brackets - 304 Stainless Steel |
| (2) F - 15 | Vinyl Hogebuilt Top Flap             |
| (2) 1538SS | Clamps - Stainless Steel             |

**Q134**  
**34" Quarter**  
**Fender Kit**







## Q124 24" Quarter Fender Kit

24" / 27" / 30" / 34"  
Available



304 Stainless Steel | 16 Gauge Perfect Mirror Finish



Quarter Fender Premium Option Kits

304 Stainless Steel | 16 Gauge Perfect Mirror Finish

| Part No. | Size               | Install Style | Wt.               | Description                               |
|----------|--------------------|---------------|-------------------|---|
| SL100424 | 30"<br>34" Overall | U-bolt        | 58 lbs.<br>(pair) | 304 SS 16 ga.<br>Perfect Mirror<br>Finish |

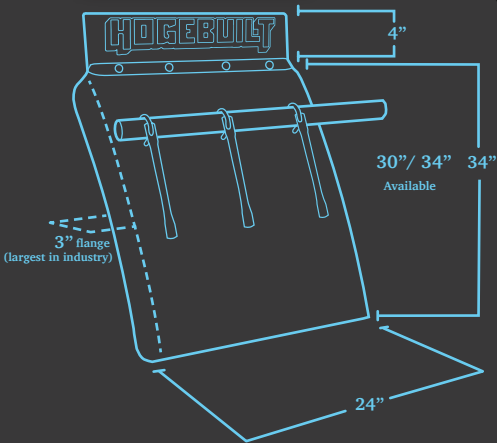
Kit Includes

- (2) 1540E 30" Fenders
- (2) 1633 Tube Brackets - 28" 304 Stainless Steel
- (2) F - 15 Vinyl Hogebuilt Top Flap
- (2) 1538SS Clamps - Stainless Steel
- (1) 1512 Support Arms & Hardware
- (1) 1518 U-bolt Kit - Stainless Steel

SL100424  
30" Quarter  
Fender Kit



JL100424  
34" Quarter  
Fender Kit



| Part No. | Size               | Install Style | Wt.               | Description                            |
|----------|--------------------|---------------|-------------------|--|
| JL100424 | 34"<br>38" Overall | U-bolt        | 67 lbs.<br>(pair) | 304 SS 16 ga.<br>Perfect Mirror Finish |

Kit Includes

- (2) 1540L 34" Fenders
- (2) 1633 Tube Brackets - 28" 304 Stainless Steel
- (2) F - 15 Vinyl Hogebuilt Top Flap
- (1) 1512 Support Arms & Hardware
- (1) 1518 U-bolt Kit - Stainless Steel





**304 Stainless Steel | 16 Gauge Perfect Mirror Finish**



# Quarter Fender Mid-Grade Option Kits

430 Stainless Steel | 16 Gauge Mirror Shine



**M124  
24\"**

| Part No. | Size         | Install Style | Wt.     | Description   |
|----------|--------------|---------------|---------|---------------|
| M124     | 24\"         | Triangle Arm  | 34 lbs. | 430 SS 16 ga. |
|          | 28\" Overall |               | (pair)  | Mirror Shine  |

## Kit Includes

- (2) 24\"
- (2) Mount Brackets - 430 Stainless Steel
- (2) Vinyl Hogebuilt Top Flap
- (2) Clamps - Stainless Steel

| Part No. | Size         | Install Style | Wt.     | Description   |
|----------|--------------|---------------|---------|---------------|
| M127     | 27\"         | Triangle Arm  | 37 lbs. | 430 SS 16 ga. |
|          | 31\" Overall |               | (pair)  | Mirror Shine  |

## Kit Includes

- (2) 27\"
- (2) Mount Brackets - 430 Stainless Steel
- (2) Vinyl Hogebuilt Top Flap
- (2) Clamps - Stainless Steel

**M127  
27\"**



**M130  
30\"**

| Part No. | Size         | Install Style | Wt.     | Description   |
|----------|--------------|---------------|---------|---------------|
| M130     | 30\"         | Triangle Arm  | 42 lbs. | 430 SS 16 ga. |
|          | 34\" Overall |               | (pair)  | Mirror Shine  |

## Kit Includes

- (2) 30\"
- (2) Mount Brackets - 430 Stainless Steel
- (2) Vinyl Hogebuilt Top Flap
- (2) Clamps - Stainless Steel

| Part No. | Size         | Install Style | Wt.     | Description   |
|----------|--------------|---------------|---------|---------------|
| M134     | 34\"         | Triangle Arm  | 47 lbs. | 430 SS 16 ga. |
|          | 38\" Overall |               | (pair)  | Mirror Shine  |

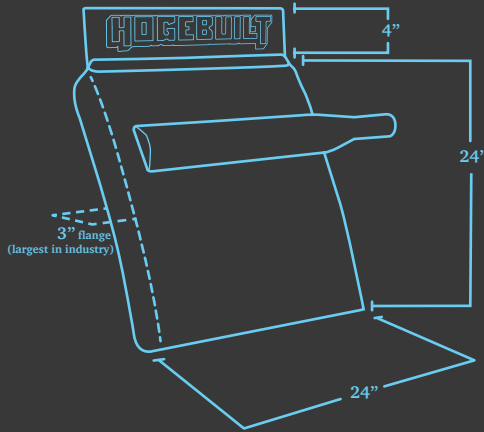
## Kit Includes

- (2) 34\"
- (2) MQ2012 Mount Brackets - 304 Stainless Steel
- (2) Vinyl Hogebuilt Top Flap
- (2) Clamps - Stainless Steel

**M134  
34\"**







## M124 24" Quarter Fender Kit

24" / 27" / 30" / 34"  
Available





# Quarter Fender Custom Mounting Options

304 Stainless Steel | 16 Gauge Mirror Finish



| Fender No. | Size               | Install Style  | Description                               |
|------------|--------------------|----------------|---|
| SL1006     | 30"<br>34" Overall | Custom Bracket | 304 SS 16 ga.<br>Perfect Mirror<br>Finish |
| JL1006     | 34"<br>38" Overall | Custom Bracket | 304 SS 16 ga.<br>Perfect Mirror<br>Finish |

## HOW TO CUSTOMIZE YOUR RIG

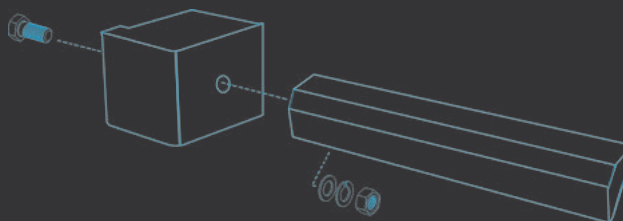
- 1 Choose your fender
- 2 Locate your suspension
- 3 Obtain KIT NUMBER

**SL1006 1PB**

## Mounting Options

| Truck Make   | Suspension                          | RH Bracket      | LH Bracket      | Kit Part No.          |
|--------------|-------------------------------------|-----------------|-----------------|-----------------------|
| Peterbilt    | Air Leaf (1993+)                    | 1754 <b>1PB</b> | 1755 <b>1PB</b> | [Fender #] <b>1PB</b> |
| Peterbilt    | Flex Air                            | 1754 <b>2PB</b> | 1755 <b>2PB</b> | [Fender #] <b>2PB</b> |
| Peterbilt    | Low Air<br>(2005+, Low Pro Tires)   | 1754 <b>4PB</b> | 1755 <b>4PB</b> | [Fender #] <b>4PB</b> |
| Peterbilt    | Low Air<br>(2005+, 24.5 Tall Tires) | 1754 <b>5PB</b> | 1755 <b>5PB</b> | [Fender #] <b>5PB</b> |
| Peterbilt    | Air Trac                            | 1754 <b>6PB</b> | 1755 <b>6PB</b> | [Fender #] <b>6PB</b> |
| Peterbilt    | Low Air<br>(Pre 2005)               | 1754 <b>9PB</b> | 1755 <b>9PB</b> | [Fender #] <b>9PB</b> |
| Kenworth     | Air Ride                            | FM2012          | FM2012          | [Fender #] <b>FM1</b> |
| Kenworth     | AG380                               | 1754 <b>2PB</b> | 1755 <b>2PB</b> | [Fender #] <b>2PB</b> |
| Kenworth     | AG400L                              | 1754 <b>4PB</b> | 1755 <b>4PB</b> | [Fender #] <b>4PB</b> |
| Freightliner | Air Liner                           | 1754 <b>FL5</b> | 1755 <b>FL5</b> | [Fender #] <b>FL5</b> |
| Universal    | Flush Mount                         | FM2012          | FM2012          | [Fender #] <b>FM1</b> |

Bracket Assembly

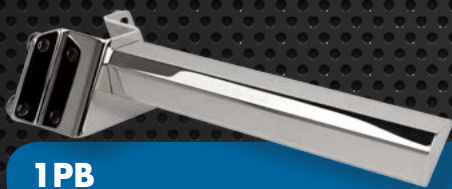


NOTE: You can order individual brackets or a complete kit.

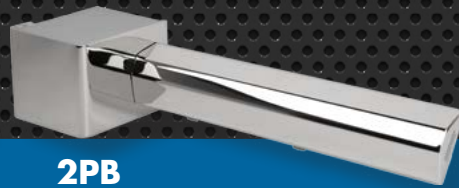


**SL10061PB**  
**Complete Fender Kit**

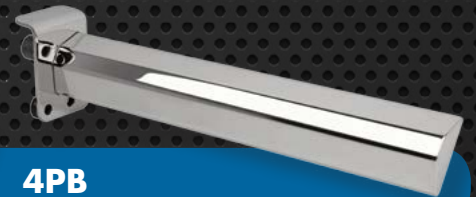
NOTE: All kits include (2) Quarter Fenders with LH and RH mounting brackets



**1PB**



**2PB**



**4PB**



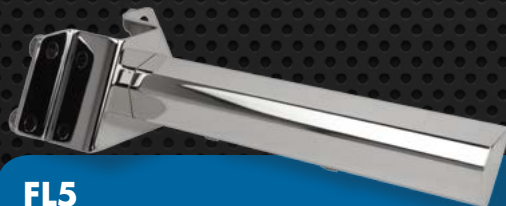
**5PB**



**6PB**



**9PB**



**FL5**



**FM2012**



# Single Axle Fenders

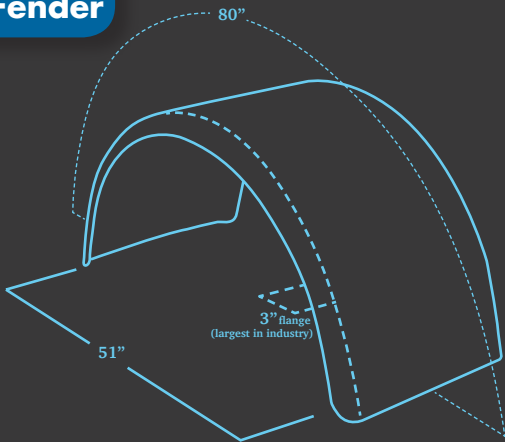
304 Stainless Steel | 430 Stainless Steel



2706/3706P  
Single Axle Fender

| Part No. | Size        | Drop  | Wt.               | Description                                 |
|----------|-------------|-------|-------------------|---|
| 2706     | 80" Overall | 25.5" | 94 lbs.<br>(pair) | 430 SS 14 Gauge<br>Mirror Shine             |
| 3706P    | 80" Overall | 25.5" | 94 lbs.<br>(pair) | 304 SS 14<br>Gauge Perfect<br>Mirror Finish |

2706/3706P  
Single Axle Fender



## Mounting Options

| Part No. | Install Style | Description                              |
|----------|---------------|--|
| MQ2012   | Universal     | 304 SS 12 Gauge<br>Perfect Mirror Finish |
| FM2012   | Universal     | 304 SS 11 Gauge<br>Perfect Mirror Finish |



FM2012



MQ2012



**Single Axle Fenders**

304 Stainless Steel | 430 Stainless Steel



# HOGEBUILT

**The Ultimate Finish for Trucks**

**HOGEBUILT.COM**



# Half Tandem Fenders

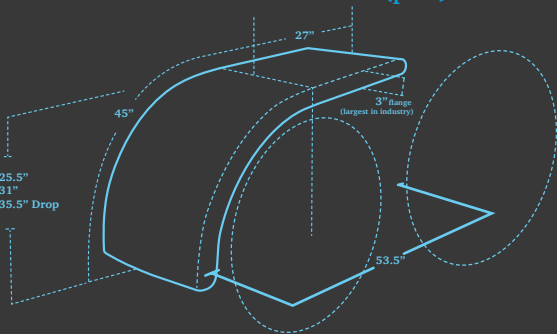
304 Stainless Steel | 430 Stainless Steel



**SS500HT/BA500HT  
Half Tandem Fender**

| Part No. | Size | Drop  | Wt.           | Description                              |
|----------|------|-------|---------------|--|
| SS500HT  | 53"  | 25.5" | 80 lbs (pair) | 304 SS 14 Gauge<br>Perfect Mirror Finish |
| BA500HT  | 53"  | 25.5" | 80 lbs (pair) | 430 SS 14 Gauge<br>Mirror Shine          |

| Part No. | Size | Drop | Wt.            | Description                              |
|----------|------|------|----------------|--|
| SS505HT  | 53"  | 31"  | 90 lbs. (pair) | 304 SS 14 Gauge<br>Perfect Mirror Finish |
| BA505HT  | 53"  | 31"  | 90 lbs. (pair) | 430 SS 14 Gauge<br>Mirror Shine          |



**SS505HT/BA505HT  
Half Tandem Fender  
*Low Rider***



**SS510HT/BA510HT  
Half Tandem Fender  
*Ultimate Low Rider***

| Part No. | Size | Drop  | Wt.            | Description                              |
|----------|------|-------|----------------|--|
| SS510HT  | 53"  | 35.5" | 94 lbs. (pair) | 304 SS 14 Gauge<br>Perfect Mirror Finish |
| BA510HT  | 53"  | 35.5" | 94 lbs. (pair) | 430 SS 14 Gauge<br>Mirror Shine          |





304 Stainless Steel | 430 Stainless Steel





# Half Tandem Fender Custom Mounting Options

304 Stainless Steel | Perfect Mirror Finish



**SS500HT**  
Half Fender



**SS505HT**  
Half Fender  
*Low Rider*



**SS510HT**  
Half Fender  
*Ultimate Low Rider*



**1406-6A**  
Rear Bracket (pair)

## HOW TO CUSTOMIZE YOUR RIG

- 1 Choose your fender
- 2 Locate your suspension
- 3 Obtain KIT NUMBER

**SS505HT PB4**

## Mounting Options

| Truck Make   | Suspension                          | RH Bracket      | LH Bracket      | Rear Bracket | Kit Part No.          |
|--------------|-------------------------------------|-----------------|-----------------|--------------|-----------------------|
| Peterbilt    | Air Leaf (1993+)                    | 1772 <b>1PB</b> | 1773 <b>1PB</b> | 1406-6A      | [Fender #] <b>PB1</b> |
| Peterbilt    | Flex Air                            | 1772 <b>2PB</b> | 1773 <b>2PB</b> | 1406-6A      | [Fender #] <b>PB2</b> |
| Peterbilt    | Air Trac<br>( 22.5 Tires)           | 1772 <b>3PB</b> | 1773 <b>3PB</b> | 1406-6A      | [Fender #] <b>PB3</b> |
| Peterbilt    | Low Air<br>(2005+, Low Pro Tires)   | 1772 <b>4PB</b> | 1773 <b>4PB</b> | 1406-6A      | [Fender #] <b>PB4</b> |
| Peterbilt    | Low Air<br>(2005+, 24.5 Tall Tires) | 1772 <b>5PB</b> | 1773 <b>5PB</b> | 1406-6A      | [Fender #] <b>PB5</b> |
| Peterbilt    | Air Trac<br>( 22.5 Tires)           | 1772 <b>6PB</b> | 1773 <b>6PB</b> | 1406-6A      | [Fender #] <b>PB6</b> |
| Peterbilt    | Low Air<br>(Pre 2005)               | 1772 <b>9PB</b> | 1773 <b>9PB</b> | 1406-6A      | [Fender #] <b>PB9</b> |
| Kenworth     | Air Ride                            | FM2012          | FM2012          | 1406-6A      | [Fender #] <b>KW9</b> |
| Kenworth     | AG380                               | 1772 <b>2PB</b> | 1773 <b>2PB</b> | 1406-6A      | [Fender #] <b>PB2</b> |
| Kenworth     | AG400L                              | 1772 <b>4PB</b> | 1773 <b>4PB</b> | 1406-6A      | [Fender #] <b>PB4</b> |
| Freightliner | Air Liner                           | 1772 <b>FL5</b> | 1773 <b>FL5</b> | 1406-6A      | [Fender #] <b>FL5</b> |
| Universal    | Post Mount                          | MQ2012          | MQ2012          | 1406-6A      |                       |
| Universal    | Flush Mount                         | FM2012          | FM2012          | 1406-6A      |                       |

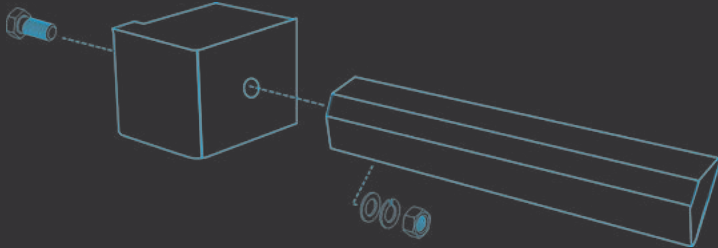


**You can order premium replacement parts!**

**304 Stainless Steel | Perfect Mirror Finish**



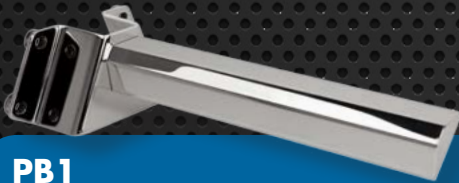
Bracket Assembly



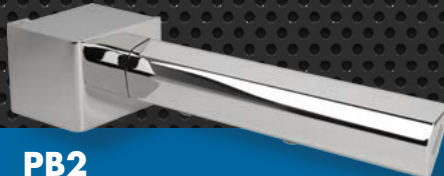
**FM2012**



**PB1**



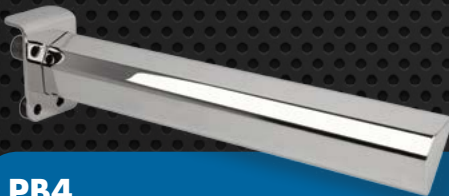
**PB2**



**PB3**



**PB4**



**PB5**



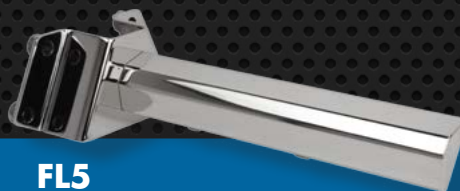
**PB6**



**PB9**



**FL5**



**MQ2012**





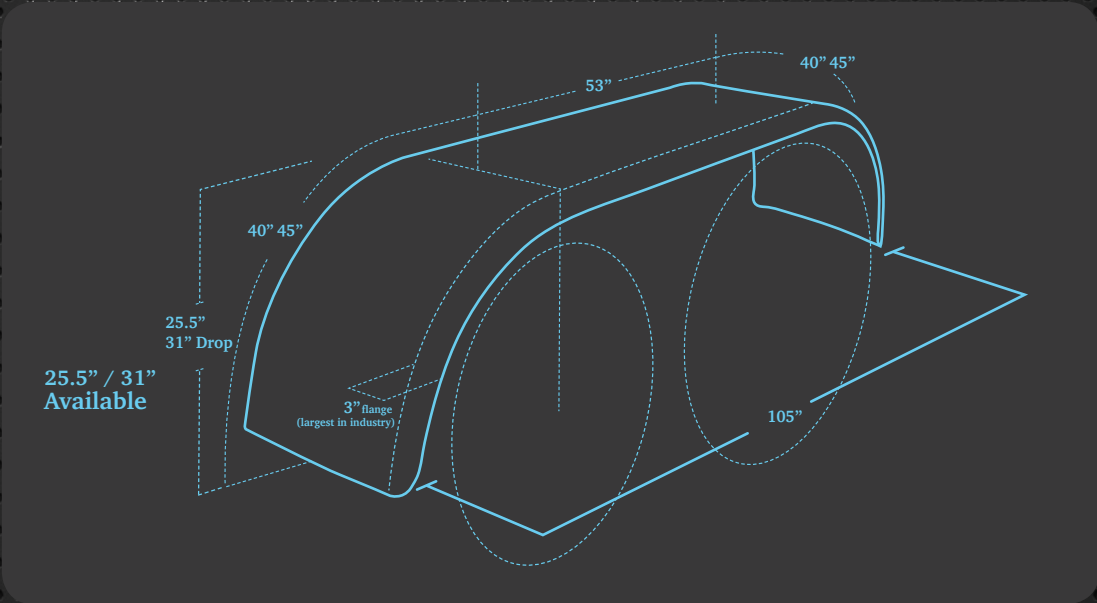
Full Tandem Fenders

304 Stainless Steel | 430 Stainless Steel



9506/5506  
Full Tandem Fender

| Part No. | Size            | Drop  | Wt.             | Description                           |
|----------|-----------------|-------|-----------------|---------------------------------------|
| 9506     | 105" Tip-to-Tip | 25.5" | 157 lbs. (pair) | 304 SS 14 Gauge Perfect Mirror Finish |
| 5506     | 105" Tip-to-Tip | 25.5" | 157 lbs. (pair) | 430 SS 14 Gauge Mirror Finish         |



9556/5556  
Full Tandem Fender  
Low Rider

| Part No. | Size            | Drop | Wt.             | Description                           |
|----------|-----------------|------|-----------------|---------------------------------------|
| 9556     | 105" Tip-to-Tip | 31"  | 170 lbs. (pair) | 304 SS 14 Gauge Perfect Mirror Finish |
| 5556     | 105" Tip-to-Tip | 31"  | 170 lbs. (pair) | 430 SS 14 Gauge Mirror Finish         |



# Full Tandem Fenders

304 Stainless Steel | 430 Stainless Steel





# Tear Drop & Flanged Full Tandem Fenders

304 Stainless Steel



**9506T**  
**Tear Drop**  
**Tandem Fender**

| Part No. | Size               | Drop  | Wt.                | Description                              |
|----------|--------------------|-------|--------------------|--|
| 9506T    | 105"<br>Tip-to-Tip | 25.5" | 167 lbs.<br>(pair) | 304 SS 14 Gauge<br>Perfect Mirror Finish |

| Part No. | Size               | Drop | Wt.                | Description                              |
|----------|--------------------|------|--------------------|--|
| 9556T    | 105"<br>Tip-to-Tip | 31"  | 180 lbs.<br>(pair) | 304 SS 14 Gauge<br>Perfect Mirror Finish |



**9556T**  
**Tear Drop**  
**Tandem Fender**  
*Low Rider*



**9506TF**  
**Flanged Full**  
**Tandem Fender**

| Part No. | Size               | Drop  | Wt.                | Description                              |
|----------|--------------------|-------|--------------------|--|
| 9506TF   | 105"<br>Tip-to-Tip | 25.5" | 161 lbs.<br>(pair) | 304 SS 14 Gauge<br>Perfect Mirror Finish |

| Part No. | Size               | Drop | Wt.                | Description                              |
|----------|--------------------|------|--------------------|--|
| 9556TF   | 105"<br>Tip-to-Tip | 31"  | 174 lbs.<br>(pair) | 304 SS 14 Gauge<br>Perfect Mirror Finish |

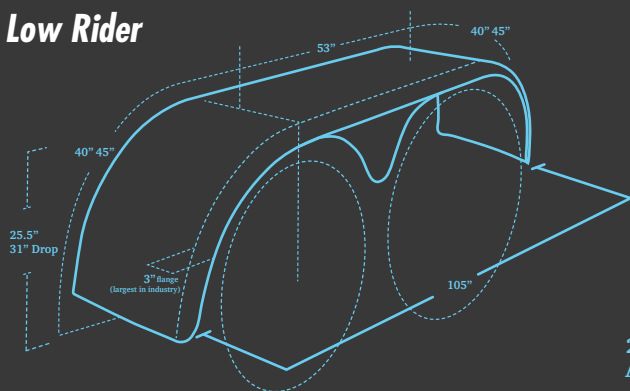


**9556TF**  
**Flanged Tandem Fender**  
*Low Rider*

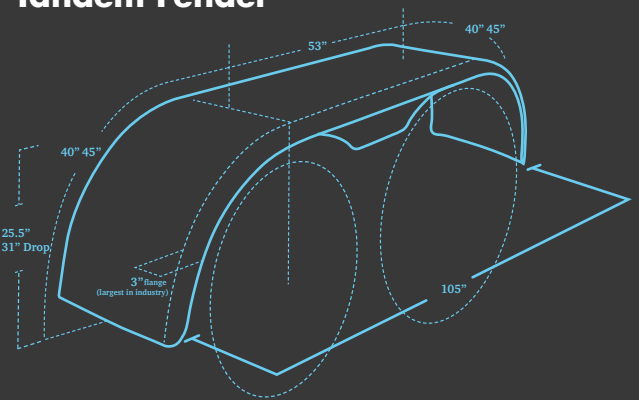




**9556T Tear Drop  
Tandem Fender  
*Low Rider***



**9506TF Flanged Full  
Tandem Fender**



25.5\"/>



# Full Tandem Fender Custom Mounting Options

304 Stainless Steel | Perfect Mirror Finish



**9506**



**9556**  
*Low Rider*



**9506T**  
*Tear Drop*



**1406-6A**  
**Support Bracket (pair)**

## HOW TO CUSTOMIZE YOUR RIG

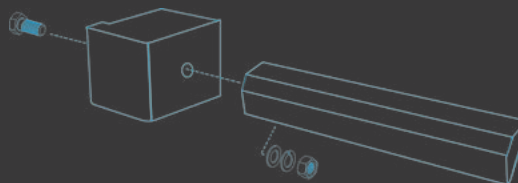
- 1 Choose your fender
- 2 Locate your suspension
- 3 Obtain KIT NUMBER

**9506 PB3**

## Mounting Options

| Truck Make   | Suspension                          | RH Front        | LH Front        | Center Support | RH Rear | LH Rear | Kit Part No.          |
|--------------|-------------------------------------|-----------------|-----------------|----------------|---------|---------|-----------------------|
| Peterbilt    | Air Leaf (1993+)                    | 1772 <b>1PB</b> | 1773 <b>1PB</b> | 1406-6A        | FM2012  | FM2012  | [Fender #] <b>PB1</b> |
| Peterbilt    | Flex Air                            | 1772 <b>2PB</b> | 1773 <b>2PB</b> | 1406-6A        | 1776    | 1775    | [Fender #] <b>PB2</b> |
| Peterbilt    | Air Trac<br>(22.5 Tires)            | 1772 <b>3PB</b> | 1773 <b>3PB</b> | 1406-6A        | FM2012  | FM2012  | [Fender #] <b>PB3</b> |
| Peterbilt    | Low Air<br>(2005+, Low Pro Tires)   | 1772 <b>4PB</b> | 1773 <b>4PB</b> | 1406-6A        | FM2012  | FM2012  | [Fender #] <b>PB4</b> |
| Peterbilt    | Low Air<br>(2005+, 24.5 Tall Tires) | 1772 <b>5PB</b> | 1773 <b>5PB</b> | 1406-6A        | FM2012  | FM2012  | [Fender #] <b>PB5</b> |
| Peterbilt    | Air Trac<br>(24.5 Tires)            | 1772 <b>6PB</b> | 1773 <b>6PB</b> | 1406-6A        | FM2012  | FM2012  | [Fender #] <b>PB6</b> |
| Peterbilt    | Low Air<br>(Pre 2005)               | 1772 <b>9PB</b> | 1773 <b>9PB</b> | 1406-6A        | FM2012  | FM2012  | [Fender #] <b>PB9</b> |
| Kenworth     | Air Ride                            | FM2012          | FM2012          | 1406-6A        | FM2012  | FM2012  | [Fender #] <b>KW9</b> |
| Kenworth     | AG380                               | 1772 <b>2PB</b> | 1773 <b>2PB</b> | 1406-6A        | 1776    | 1775    | [Fender #] <b>PB2</b> |
| Kenworth     | AG400L                              | 1772 <b>4PB</b> | 1773 <b>4PB</b> | 1406-6A        | FM2012  | FM2012  | [Fender #] <b>PB4</b> |
| Freightliner | Air Liner                           | 1772 <b>FL5</b> | 1773 <b>FL5</b> | 1406-6A        | FM2012  | FM2012  | [Fender #] <b>FL5</b> |
| Universal    | Post Mount                          | MQ2012          | MQ2012          | 1406-6A        | MQ2012  | MQ2012  |                       |
| Universal    | Flush Mount                         | FM2012          | FM2012          | 1406-6A        | FM2012  | FM2012  |                       |

Bracket Assembly





**Yes, you can order premium replacement parts!**

304 Stainless Steel | Perfect Mirror Finish



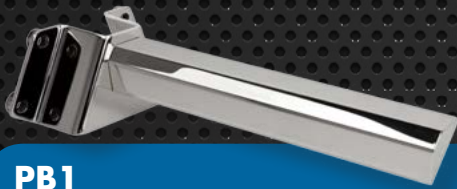
**9556T**  
Tear Drop  
*Low Rider*



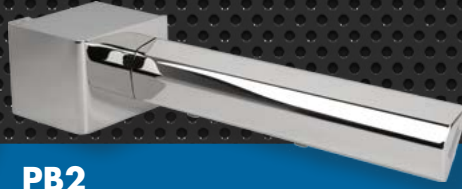
**9506TF**  
Flanged



**9556TF**  
Flanged  
*Low Rider*



**PB1**



**PB2**



**PB3**



**PB4**



**PB5**



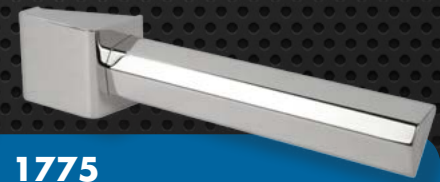
**PB6**



**PB9**



**FL5**



**1775**



**MQ2012**



**FM2012**



# Mounting Components



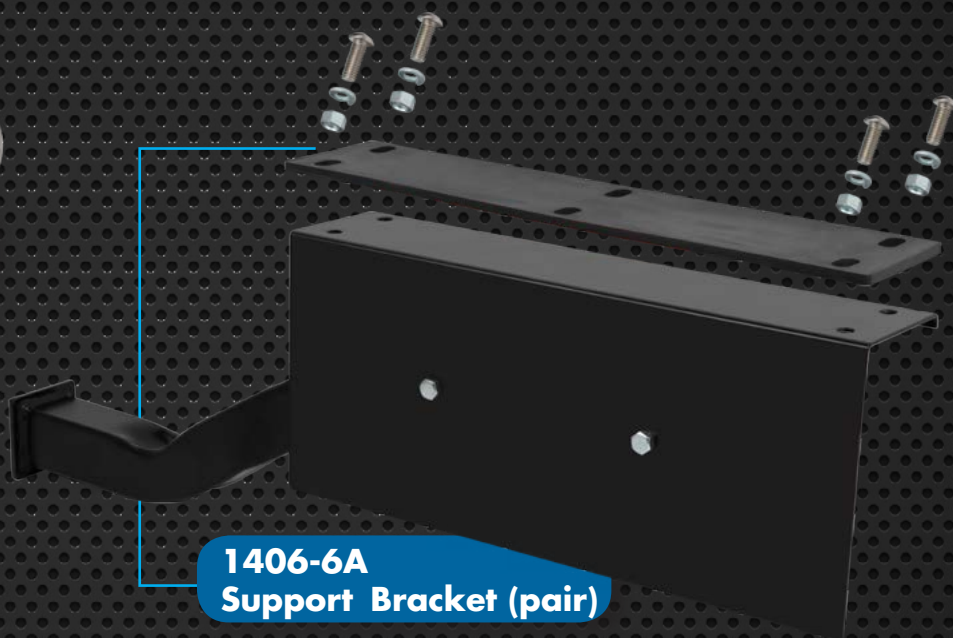
**1518  
U-Bolt Kit**



**1538SS  
Stainless Steel Clamp**



**1447  
Single Post Mount**



**1406-6A  
Support Bracket (pair)**



**MV2000** 430 Stainless Steel 14 Gauge Mirror Shine  
Quarter Fender Applications (M124 - M134)

**MQ2000** 304 Stainless Steel 14 Gauge Perfect Mirror Finish  
Quarter Fender Applications (Q124 - Q134)

**MQ2012** 304 Stainless Steel 12 Gauge Perfect Mirror Finish  
Single Axle, Half Tandem and Full Tandem Applications



**1633** 28 inch arm, 304 Stainless Steel  
Tube Mirror Finish Quarter  
Fender Applications



**F-15  
Vinyl Top Flap**

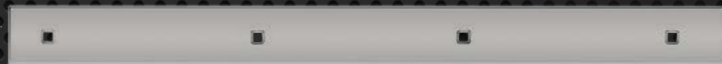
**HOGEBUILT®**



**GR530  
Freightliner Classic XL  
(FLD-120)**

**1641/1741  
Top 24" SS**

with carriage bolts



**1641** 430 Stainless Steel Upper Flap Weight

**1741** 304 Premium Stainless Steel Upper Flap Weight



**1642/1742  
Bottom 24" SS**

with carriage bolts

**1642** 430 Stainless Steel Bottom Flap Weight

**1742** 304 Premium Stainless Steel Bottom Flap Weight







## The Ultimate Finish for Trucks

800-421-1589

Google Custom Search

[Home](#) [What's New](#) [Products](#) [Applications](#) [Gallery](#) [FAQ](#) [About Us](#) [Contact Us](#)

### Full Tandem Flanged Fenders - Breathtaking!

**PRODUCT SEARCH**

Product Type  [GO](#)

or

Application  [GO](#)



#### FIND A DEALER NEAR YOU



Choose Your State or Province

Select Your Area  [SEARCH](#)

#### JOIN OUR MAILING LIST

Email:  [GO](#)

Privacy by  SafeSubscribe<sup>SM</sup>

#### ONLINE CATALOG



[View Our Online Catalog>](#)

#### WATCH HOGEBUILT



Hogebuilt Video

Visit [Hogebuilt.com](http://Hogebuilt.com) for products, specifications, watch videos, view our gallery and find a dealer near you.



**ONLINE HOGEBUILT**  
[hogebuilt.com](http://hogebuilt.com)



**EMAIL HOGEBUILT**  
[sales@hogebuilt.com](mailto:sales@hogebuilt.com)  
[customerservice@hogebuilt.com](mailto:customerservice@hogebuilt.com)



**CALL HOGEBUILT**  
800-421-1589



**FAX HOGEBUILT**  
800-421-1589



## CLAIMS FOR SHORTAGES

- Shortages must be reported to Hogebuilt Customer Service in writing within four (4) working days from the carrier's delivery date. Customer is responsible for checking and reporting any errors at the time of delivery before signing the bill of lading. If no discrepancy is reported within the allotted time, Customer agrees that the BOL/Packing Slip contents were received as shipped.
- Claims for shortages must include the following information:
  - Invoice Number
  - Date of receipt
  - Carrier and PRO number

## CLAIMS FOR DAMAGED MERCHANDISE

- All items are sold FOB Hogebuilt manufacturing plant, Goodlettsville, TN. Ownership of the product is transferred to the customers at the point it leaves our facility. Hogebuilt packaging practices have been developed and standardized to protect product under normal transit conditions. Never-the-less, occasional damage occurs in transit.
- Product received and any signs of damage or distress must be identified on all copies of the receiving paperwork / BOL before the driver leaves your dock. Damage should be documented photographically and the product held "as is" for inspection by the carriers representative before processing further.
- Customer's sole recourse for reimbursement of damaged product cost is through the Carrier's freight claim process.
- Please contact Hogebuilt Customer Service for any required support or to suggest packaging improvements.

## RETURN GOODS POLICY

- Material may be returned to Hogebuilt when a Return Material Authorization (RMA) number has been issued.
- Returns must be received by Hogebuilt within 30 days of receiving RMA number.
- Parts to be returned must have been purchased directly from Hogebuilt within the last 12 months. Proof of purchase is required.
- Parts purchased through a Dealer must be returned to that distributor. This includes drop shipped parts, as well.
- All return documentation should reference the original Hogebuilt invoice number.
- Parts must be in new and re-salable condition and should be in their original packaging.
- Customer is responsible for packaging parts for protection in transit.
- Damaged, rusted, repainted, used, reconditioned, altered or incomplete parts are not eligible for return.
- All material will be shipped freight pre-paid to the address provided on the RMA.
- Parts are subject to a standard 15% re-stocking fee. Additional fees may be assessed pending final inspection.
- Obsolete, custom or proprietary parts are not eligible for return.
- Annual return amount is limited to 5% of the prior year's purchases.

## WARRANTY

- Hogebuilt warrants its parts and products against defects in workmanship and material for a period of one year from the date of purchase. Any claim not submitted within this period shall conclusively be deemed waived by the buyer. Buyer agrees to indemnify Hogebuilt against any claim(s) made by buyer's subsequent customers or assignees of the purchased product.
- Half tandem and full tandem fenders must be installed with Hogebuilt mounting brackets in order for the one year warranty to be valid.
- For warranty claims, please contact Hogebuilt Customer Service at 800-412-1589 or e-mail [customerservice@hogebuilt.com](mailto:customerservice@hogebuilt.com).
- Repair or replacement will be made at Hogebuilt's discretion upon inspection of the goods. No orders are to be returned without expressed consent and direction of Hogebuilt.



# HOGEBUILT

**The Ultimate Finish for Trucks™**

100 Northfork Lane | Goodlettsville, TN 37072

Phone: 800-421-1589 | Fax 800-421-1589

[sales@hogebuilt.com](mailto:sales@hogebuilt.com) | [customerservice@hogebuilt.com](mailto:customerservice@hogebuilt.com)

**HOGEBUILT.COM**