

HOGEBUILT®

75

ORIGINAL. HANDCRAFTED. QUALITY.

EST. 1944

CELEBRATING 75 YEARS



HOGEBUILT.COM

Table of Contents

PAGE DESCRIPTION

PAGE

Table of Contents & Placing Orders	1
Company History	2
Quarter Fender Premium Option Kits	3
Quarter Fender Mid-Grade Option Kits	7
Quarter Fender Custom Mounting Options	9
Single Axle Fenders	11
Half Tandem Fenders	13
Half Tandem Custom Mounting Options	15
Full Tandem Fenders	17
Tear Drop & Flanged Full Tandem Fenders	19
Full Tandem Custom Mounting Options	21
Mounting Components	23
Top Flap, Rear Bracket & Grille	24
Hogebuilt Online	25
Claims, Returns & Warranty Information	26



CALL HOGEBUILT

800-421-1589



FAX HOGEBUILT

800-421-1589



EMAIL HOGEBUILT

sales@hogebuilt.com

customerservice@hogebuilt.com



ONLINE HOGEBUILT

www.hogebuilt.com



PLACING ORDERS

- E-MAIL order details to customerservice@hogebuilt.com
- FAX order details to our Customer Service Team: **800-421-1589**
- Contact our Customer Service Team Leader: **800-421-1589**
- Order must define any unique handling, shipping or processing requirements.
- Minimum order is \$250.

FREIGHT POLICY

- All orders are FOB Springfield, TN 37172
- COD orders are not accepted.
- Prepaid freight is available on orders exceeding \$4,000 in product value to customers in good standing (1 order/ 1 destination in the continental U.S).
- Prepaid Freight carrier and routing is at Hogebuilt's discretion.

HOGEBUILT®

The Ultimate Finish for Trucks

Our History

In 1944, Ernest (Ernie) Hoge began handcrafting small trailer fenders in Lynwood, CA under the name Hogebuilt. Ernie was a master metal-worker and developed a unique process of hand rolling each fender to create a smooth, wrinkle free finish. In the beginning, he manufactured fenders for horse trailers, motorcycles and boat trailers.

Sourcing steel for Hogebuilt fenders allowed Ernie to befriend George Lombino, the Vice President of a steel company in Los Angeles and former truck driver. They worked together for almost thirty years until 1972 when Ernie retired and sold the company to George. To ensure the craftsmanship and quality of Hogebuilt continued, Ernie worked along-side George's son, George Jr., for a year teaching him on all the techniques he had developed.

The following year George Jr. attended a trucking show in Anaheim, CA which sparked the idea to build show-quality stainless steel fenders for big rigs. Thus, in 1973, Hogebuilt introduced 24" fenders, and soon thereafter they began manufacturing 27", 30" and 34" quarter fenders, as well as full and half-tandem fenders.

In the early years, Hogebuilt fenders were made of chrome-plated steel that was subject to chipping when dinged. As a solution to this problem, and enhance the look of their products, the Lombino's began using 304 Stainless Steel that featured a non-directional polished finish. This finish is basically a mirror. The fenders continued to feature a 3" side flange which remains the largest in the industry today. It was around this same time they introduced brackets that were custom fit for each type of suspension to eliminate the need for drilling extra holes in the frame.

After working hard for over 30 years, George Sr. sought retirement, but George Jr. did not want to continue without his dad next to him. It was at that time, in 2004, that Hogebuilt was purchased by the Marmon Group and now operates under Marmon Highway Technologies. A few years later, the company relocated from Southern California to Springfield, TN, where it resides today. Throughout all the moves and acquisitions, Hogebuilt continued making quality, handcrafted products and providing unsurpassed customer service.

75 years later, Hogebuilt remains the recognized leader in the manufacturing of premium quality truck and trailer spray suppression systems. We now offer a complete line of quarter, single, tandem and half-tandem fenders manufactured of premium 304 stainless steel with a mirror finish for a lasting image. Our engineered custom brackets integrate the fenders with a suspension system for sustained reliability. Hogebuilt has since added a mid-grade line of fenders produced in a 430 stainless steel with a mirror shine finish. All of our Hogebuilt fenders are handcrafted in the USA.

Hogebuilt quarter fenders and custom brackets are factory installed options on select trucks for Peterbilt and Kenworth factories.

Contact your local Chrome Shop, Peterbilt or Kenworth dealer for genuine Hogebuilt Products.



Quarter Fender Premium Option Kits

304 Stainless Steel | 16 Gauge Perfect Mirror Finish



**Q124
24" Quarter
Fender Kit**

Part No.	Size	Install Style	Wt.	Description
Q124	24" 28" With Flap	Triangle Arm	40 lbs. (pair)	304 SS 16 ga. Perfect Mirror Finish

Kit Includes

(2) MF124	24" Fenders
(2) MQ2000	Mount Brackets - 304 Stainless Steel
(2) F - 15	Vinyl Hogebuilt Top Flap
(2) 1538SS	Clamps - Stainless Steel

Part No.	Size	Install Style	Wt.	Description
Q127	27" 31" With Flap	Triangle Arm	44 lbs. (pair)	304 SS 16 ga. Perfect Mirror Finish

Kit Includes

(2) MF127	27" Fenders
(2) MQ2000	Mount Brackets - 304 Stainless Steel
(2) F - 15	Vinyl Hogebuilt Top Flap
(2) 1538SS	Clamps - Stainless Steel

**Q127
27" Quarter
Fender Kit**



**Q130
30" Quarter
Fender Kit**

Part No.	Size	Install Style	Wt.	Description
Q130	30" 34" With Flap	Triangle Arm	48 lbs. (pair)	304 SS 16 ga. Perfect Mirror Finish

Kit Includes

(2) MF130	30" Fenders
(2) MQ2000	Mount Brackets - 304 Stainless Steel
(2) F - 15	Vinyl Hogebuilt Top Flap
(2) 1538SS	Clamps - Stainless Steel

Part No.	Size	Install Style	Wt.	Description
Q134	34" 38" With Flap	Triangle Arm	50 lbs. (pair)	304 SS 16 ga. Perfect Mirror Finish

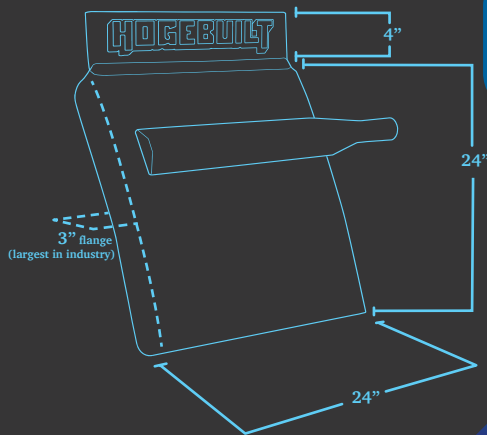
Kit Includes

(2) MF134	34" Fenders
(2) MQ2012	Mount Brackets - 304 Stainless Steel
(2) F - 15	Vinyl Hogebuilt Top Flap
(2) 1538SS	Clamps - Stainless Steel

**Q134
34" Quarter
Fender Kit**



Note: Quarter fenders are fully assembled.



Q124 24\" Quarter Fender Kit

24\" / 27\" / 30\"/34\"
Available



304 Stainless Steel | 16 Gauge Perfect Mirror Finish

Quarter Fender Premium Option Kits

304 Stainless Steel | 16 Gauge Perfect Mirror Finish

Part No.	Size	Install Style	Wt.	Description
SL100424	30" 34" With Flap	U-bolt	58 lbs. (pair)	304 SS 16 ga. Perfect Mirror Finish

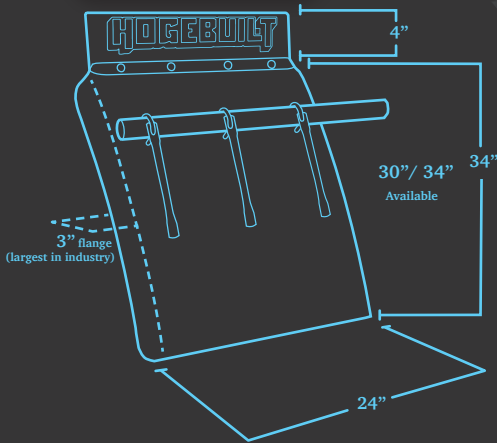
Kit Includes

- (2) 1540E 30" Fenders
- (2) 1633 Tube Brackets - 28" 304 Stainless Steel
- (2) F - 15 Vinyl Hogebuilt Top Flap
- (2) 1538SS Clamps - Stainless Steel
- (1) 1512 Support Arms & Hardware
- (1) 1518 U-bolt Kit - Stainless Steel

SL100424
30" Quarter
Fender Kit



JL100424
34" Quarter
Fender Kit



Part No.	Size	Install Style	Wt.	Description
JL100424	34" 38" With Flap	U-bolt	67 lbs. (pair)	304 SS 16 ga. Perfect Mirror Finish

Kit Includes

- (2) 1540L 34" Fenders
- (2) 1633 Tube Brackets - 28" 304 Stainless Steel
- (2) F - 15 Vinyl Hogebuilt Top Flap
- (1) 1512 Support Arms & Hardware
- (1) 1518 U-bolt Kit - Stainless Steel

Note: Quarter fenders are fully assembled.



304 Stainless Steel | 16 Gauge Perfect Mirror Finish

Quarter Fender Mid-Grade Option Kits

430 Stainless Steel | 16 Gauge Mirror Shine



**M124
24" Quarter
Fender Kit**

Part No.	Size	Install Style	Wt.	Description
M124	24" 28" With Flap	Triangle Arm	34 lbs. (pair)	430 SS 16 ga. Mirror Shine

Kit Includes

- (2) 24" Fenders
- (2) MV2000 Mount Brackets - 430 Stainless Steel
- (2) Vinyl Hogebuilt Top Flap
- (2) Clamps - Stainless Steel

Part No.	Size	Install Style	Wt.	Description
M127	27" 31" With Flap	Triangle Arm	37 lbs. (pair)	430 SS 16 ga. Mirror Shine

Kit Includes

- (2) 27" Fenders
- (2) MV2000 Mount Brackets - 430 Stainless Steel
- (2) Vinyl Hogebuilt Top Flap
- (2) Clamps - Stainless Steel

**M127
27" Quarter
Fender Kit**



Part No.	Size	Install Style	Wt.	Description
M130	30" 34" With Flap	Triangle Arm	42 lbs. (pair)	430 SS 16 ga. Mirror Shine

Kit Includes

- (2) 30" Fenders
- (2) MV2000 Mount Brackets - 430 Stainless Steel
- (2) Vinyl Hogebuilt Top Flap
- (2) Clamps - Stainless Steel

**M130
30" Quarter
Fender Kit**



Part No.	Size	Install Style	Wt.	Description
M134	34" 38" With Flap	Triangle Arm	47 lbs. (pair)	430 SS 16 ga. Mirror Shine

Kit Includes

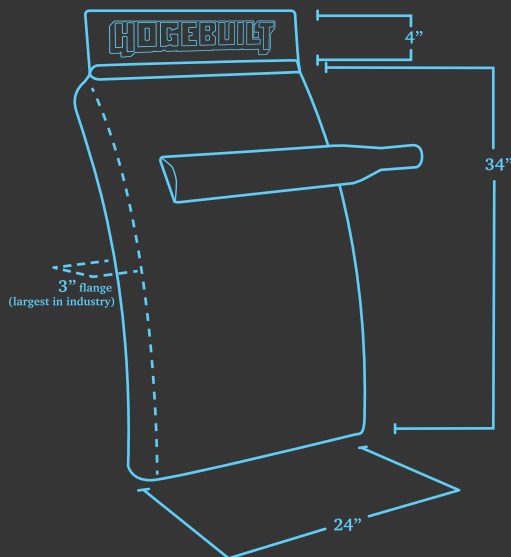
- (2) 34" Fenders
- (2) MQ2012 Mount Brackets - 304 Stainless Steel
- (2) Vinyl Hogebuilt Top Flap
- (2) Clamps - Stainless Steel

**M134
34" Quarter
Fender Kit**



Note: Quarter fenders are fully assembled.

Quarter Fender Mid-Grade Option Kits



M134 34" Quarter Fender Kit

24" / 27" / 30" / 34"
Available

Quarter Fender Custom Mounting Options

304 Stainless Steel | 16 Gauge Mirror Finish



Fender No.	Size	Install Style	Description
SL1006	30" 34" Overall	Custom Bracket	304 SS 16 ga. Perfect Mirror Finish
JL1006	34" 38" Overall	Custom Bracket	304 SS 16 ga. Perfect Mirror Finish

HOW TO CUSTOMIZE YOUR RIG

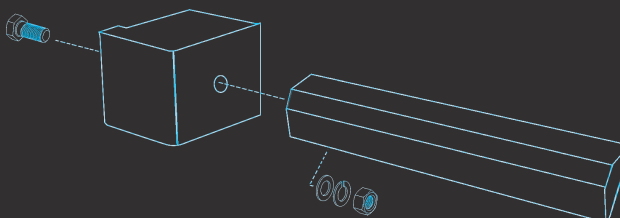
- 1 Choose your fender
- 2 Locate your suspension
- 3 Obtain KIT NUMBER

SL1006 1PB

Mounting Options

Truck Make	Suspension	RH Bracket	LH Bracket	Kit Part No.
Peterbilt	Air Leaf (1993+)	1754 1PB	1755 1PB	[Fender #] 1PB
Peterbilt	Flex Air	1754 2PB	1755 2PB	[Fender #] 2PB
Peterbilt	Low Air (2005+, 22.5 & 24.5 Low Pro Tires)	1754 4PB	1755 4PB	[Fender #] 4PB
Peterbilt	Low Air (24.5 Tall Rubber/11R)	1754 5PB	1755 5PB	[Fender #] 5PB
Peterbilt	Air Trac	1754 6PB	1755 6PB	[Fender #] 6PB
Peterbilt	Low Air (Pre 2005)	1754 9PB	1755 9PB	[Fender #] 9PB
Kenworth	Air Ride (AG400)	FM2012	FM2012	[Fender #] FM1
Kenworth	AG380	1754 2PB	1755 2PB	[Fender #] 2PB
Kenworth	AG400L	1754 4PB	1755 4PB	[Fender #] 4PB
Kenworth	AG400L (24.5 Tall Rubber/11R)	1754 5PB	1755 5PB	[Fender #] 5PB
Freightliner	Air Liner	1754 FL5	1755 FL5	[Fender #] FL5
Universal	Flush Mount	FM2012	FM2012	[Fender #] FM1

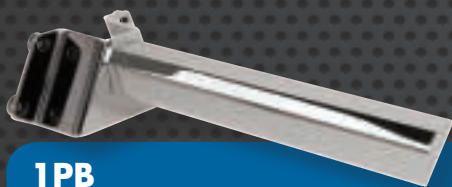
Bracket Assembly



NOTE: You can order individual brackets or a complete kit.

SL10061PB
Complete Fender Kit

NOTE: All kits include (2) Quarter Fenders with LH and RH mounting brackets



1PB



2PB



4PB



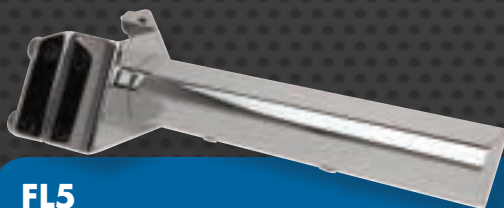
5PB



6PB



9PB



FL5



FM2012

Universal-
Flush Mount.
See page 23.

Single Axle Fenders

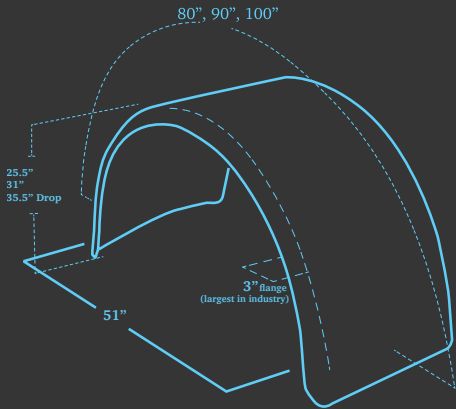
304 Stainless Steel | 430 Stainless Steel



3706P/2706
Single Axle Fender

Part No.	Size	Drop	Wt.	Description
3706P	80" Overall	25.5"	90 lbs. (pair)	304 SS 14 Gauge Perfect Mirror Finish
2706	80" Overall	25.5"	90 lbs. (pair)	430 SS 14 Gauge Mirror Shine

Part No.	Size	Drop	Wt.	Description
3756P	90" Overall	31"	94 lbs (pair)	304 SS 14 Gauge Perfect Mirror Shine
2756	90" Overall	31"	94 lbs (pair)	430 SS 14 Gauge Mirror Shine



3756P/2756
Single Axle Fender



3710P/2710
Single Axle Fender

Part No.	Size	Drop	Wt.	Description
3710P	100" Overall	35.5"	100 lbs (pair)	304 SS 14 Gauge Perfect Mirror Finish
2710	100" Overall	35.5"	100 lbs. (pair)	430 SS 14 Gauge Mirror Shine



Mounting Options



MQ2012

Part No.	Install Style	Description
MQ2012	Universal- Post Mount	304 SS 12 Gauge Perfect Mirror Finish



FM2012

Part No.	Install Style	Description
FM2012	Universal- Flush Mount. See page 23.	304 SS 11 Gauge Perfect Mirror Finish

Half Tandem Fenders

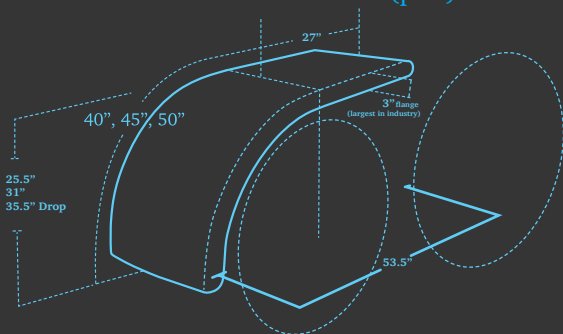
304 Stainless Steel | 430 Stainless Steel



SS500HT/BA500HT
Half Tandem Fender

Part No.	Size	Drop	Wt.	Description
SS500HT	53"	25.5"	80 lbs (pair)	304 SS 14 Gauge Perfect Mirror Finish
BA500HT	53"	25.5"	80 lbs (pair)	430 SS 14 Gauge Mirror Shine

Part No.	Size	Drop	Wt.	Description
SS505HT	53"	31"	90 lbs. (pair)	304 SS 14 Gauge Perfect Mirror Finish
BA505HT	53"	31"	90 lbs. (pair)	430 SS 14 Gauge Mirror Shine



SS505HT/BA505HT
Half Tandem Fender
Low Rider



SS510HT/BA510HT
Half Tandem Fender
Ultimate Low Rider

Part No.	Size	Drop	Wt.	Description
SS510HT	53"	35.5"	94 lbs. (pair)	304 SS 14 Gauge Perfect Mirror Finish
BA510HT	53"	35.5"	94 lbs. (pair)	430 SS 14 Gauge Mirror Shine

Half Tandem Fenders

304 Stainless Steel | 430 Stainless Steel



304 Stainless Steel | 430 Stainless Steel



Half Tandem Fender Custom Mounting Options

304 Stainless Steel | Perfect Mirror Finish



SS500HT
Half Fender



SS505HT
Half Fender
Low Rider



SS510HT
Half Fender
Ultimate Low Rider



1406-6A
Rear Bracket (pair)

HOW TO CUSTOMIZE YOUR RIG

- 1 Choose your fender
- 2 Locate your suspension
- 3 Obtain KIT NUMBER

Mounting Options

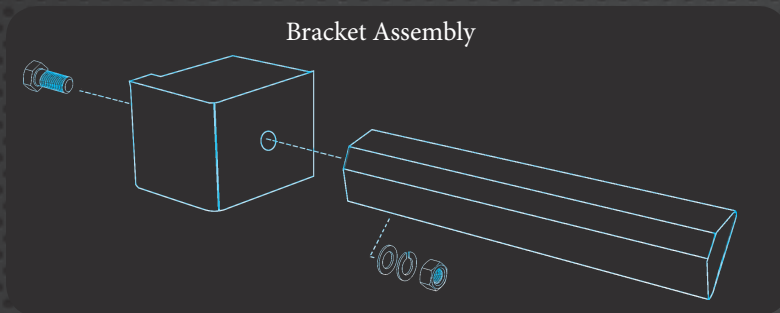
SS505HT PB4

Truck Make	Suspension	RH Bracket	LH Bracket	Rear Bracket	Kit Part No.
Peterbilt	Air Leaf (1993+)	1772 1PB	1773 1PB	1406-6A	[Fender #] PB1
Peterbilt	Flex Air	1772 2PB	1773 2PB	1406-6A	[Fender #] PB2
Peterbilt	Air Trac (22.5 & 24.5 Low Pro Tires)	1772 3PB	1773 3PB	1406-6A	[Fender #] PB3
Peterbilt	Low Air (2005+, 22.5 & 24.5 Low Pro Tires)	1772 4PB	1773 4PB	1406-6A	[Fender #] PB4
Peterbilt	Low Air (24.5 Tall Rubber/11R)	1772 5PB	1773 5PB	1406-6A	[Fender #] PB5
Peterbilt	Air Trac (24.5 Tall Rubber/11R)	1772 6PB	1773 6PB	1406-6A	[Fender #] PB6
Peterbilt	Low Air (Pre 2005)	1772 9PB	1773 9PB	1406-6A	[Fender #] PB9
Kenworth	Air Ride (AG400)	FM2012	FM2012	1406-6A	[Fender #] KW9
Kenworth	AG380	1772 2PB	1773 2PB	1406-6A	[Fender #] PB2
Kenworth	AG400L	1772 4PB	1773 4PB	1406-6A	[Fender #] PB4
Kenworth	AG400L (24.5 Tall Rubber/11R)	1772 5PB	1773 5PB	1406-6A	[Fender #] PB5
Freightliner	Air Liner	1772 FL5	1773 FL5	1406-6A	[Fender #] FL5
Universal	Post Mount	MQ2012	MQ2012	1406-6A	
Universal	Flush Mount	FM2012	FM2012	1406-6A	

NOTE: You can order individual brackets or a complete kit.

You can order premium replacement parts!

304 Stainless Steel | Perfect Mirror Finish



Universal-
Flush Mount.
See page 23.



FM2012



PB1



PB2



PB3



PB4



PB5



PB6



PB9



FL5



MQ2012

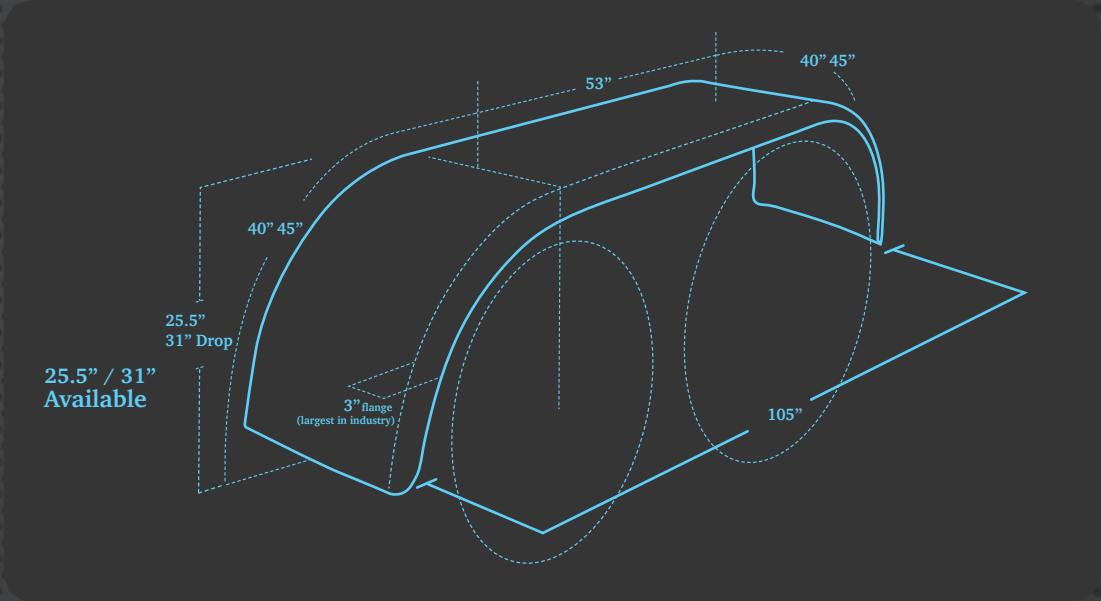
Full Tandem Fenders

304 Stainless Steel | 430 Stainless Steel



9506/5506
Full Tandem Fender

Part No.	Size	Drop	Wt.	Description
9506	105" Tip-to-Tip	25.5"	157 lbs. (pair)	304 SS 14 Gauge Perfect Mirror Finish
5506	105" Tip-to-Tip	25.5"	157 lbs. (pair)	430 SS 14 Gauge Mirror Shine



9556/5556
Full Tandem Fender
Low Rider

Part No.	Size	Drop	Wt.	Description
9556	105" Tip-to-Tip	31"	170 lbs. (pair)	304 SS 14 Gauge Perfect Mirror Finish
5556	105" Tip-to-Tip	31"	170 lbs. (pair)	430 SS 14 Gauge Mirror Shine

Full Tandem Fenders

304 Stainless Steel | 430 Stainless Steel



Tear Drop & Flanged Full Tandem Fenders

304 Stainless Steel



9506T
Tear Drop
Tandem Fender

Part No.	Size	Drop	Wt.	Description
9506T	105" Tip-to-Tip	25.5"	167 lbs. (pair)	304 SS 14 Gauge Perfect Mirror Finish



9556T
Tear Drop
Tandem Fender
Low Rider

Part No.	Size	Drop	Wt.	Description
9556T	105" Tip-to-Tip	31"	180 lbs. (pair)	304 SS 14 Gauge Perfect Mirror Finish



9506TF
Flanged Full
Tandem Fender

Part No.	Size	Drop	Wt.	Description
9506TF	105" Tip-to-Tip	25.5"	161 lbs. (pair)	304 SS 14 Gauge Perfect Mirror Finish

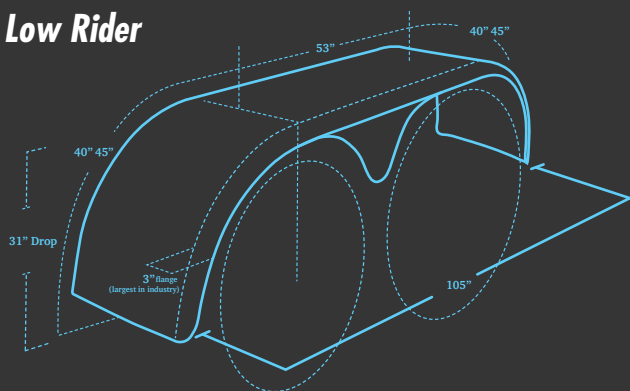


9556TF
Flanged Tandem Fender
Low Rider

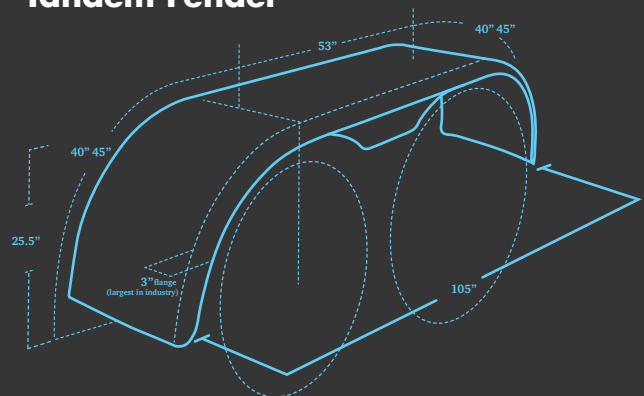
Part No.	Size	Drop	Wt.	Description
9556TF	105" Tip-to-Tip	31"	174 lbs. (pair)	304 SS 14 Gauge Perfect Mirror Finish



**9556T Tear Drop
Tandem Fender**
Low Rider



**9506TF Flanged Full
Tandem Fender**



Full Tandem Fender Custom Mounting Options

304 Stainless Steel | Perfect Mirror Finish



9506



9556
Low Rider



9506T
Tear Drop



1406-6A
Support Bracket (pair)

HOW TO CUSTOMIZE YOUR RIG

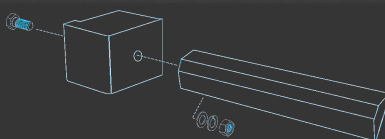
- 1 Choose your fender
- 2 Locate your suspension
- 3 Obtain KIT NUMBER

9506 PB3

Mounting Options

Truck Make	Suspension	RH Front	LH Front	Center Support	RH Rear	LH Rear	Kit Part No.
Peterbilt	Air Leaf (1993+)	1772 1PB	1773 1PB	1406-6A	FM2012	FM2012	[Fender #] PB1
Peterbilt	Flex Air	1772 2PB	1773 2PB	1406-6A	1776	1775	[Fender #] PB2
Peterbilt	Air Trac (22.5 & 24.5 Low Pro Tires)	1772 3PB	1773 3PB	1406-6A	FM2012	FM2012	[Fender #] PB3
Peterbilt	Low Air (2005+, 22.5 & 24.5 Low Pro Tires)	1772 4PB	1773 4PB	1406-6A	FM2012	FM2012	[Fender #] PB4
Peterbilt	Low Air (24.5 Tall Rubber/11R)	1772 5PB	1773 5PB	1406-6A	FM2012	FM2012	[Fender #] PB5
Peterbilt	Air Trac (24.5 Tall Rubber/11R)	1772 6PB	1773 6PB	1406-6A	FM2012	FM2012	[Fender #] PB6
Peterbilt	Low Air (Pre 2005)	1772 9PB	1773 9PB	1406-6A	FM2012	FM2012	[Fender #] PB9
Kenworth	Air Ride (AG400)	FM2012	FM2012	1406-6A	FM2012	FM2012	[Fender #] KW9
Kenworth	AG380	1772 2PB	1773 2PB	1406-6A	1776	1775	[Fender #] PB2
Kenworth	AG400L	1772 4PB	1773 4PB	1406-6A	FM2012	FM2012	[Fender #] PB4
Kenworth	AG400L (24.5 Tall Rubber/11R)	1772 5PB	1773 5PB	1406-6A	FM2012	FM2012	[Fender #] PB5
Freightliner	Air Liner	1772 FL5	1773 FL5	1406-6A	FM2012	FM2012	[Fender #] FL5
Universal	Post Mount	MQ2012	MQ2012	1406-6A	MQ2012	MQ2012	
Universal	Flush Mount	FM2012	FM2012	1406-6A	FM2012	FM2012	

Bracket Assembly



NOTE: You can order individual brackets or a complete kit.

Yes, you can order premium replacement parts!

304 Stainless Steel | Perfect Mirror Finish



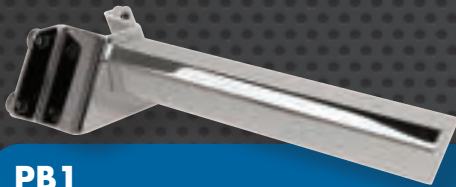
9556T
Tear Drop
Low Rider



9506TF
Flanged



9556TF
Flanged
Low Rider



PB1



PB2



PB3



PB4



PB5



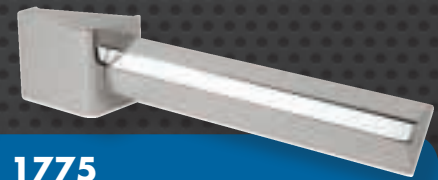
PB6



PB9



FL5



1775



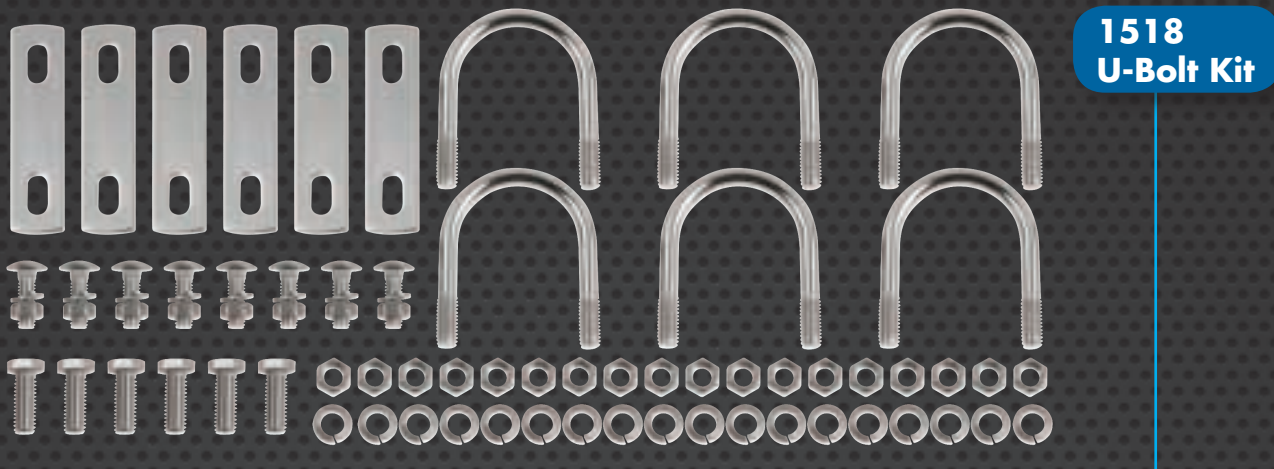
MQ2012



FM2012

Universal-
Flush Mount.
See page 23.

Mounting Components



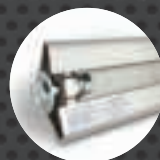
1518
U-Bolt Kit



1447
Single Post Mount



1538SS
Stainless Steel Clamp



Flush Mount Bracket with
Single Bolt Installation,
no post mount required

MV2000

430 Stainless Steel 14 Gauge Mirror Shine
Quarter Fender Applications (M124 - M130)

MQ2000

304 Stainless Steel 14 Gauge Perfect Mirror Finish
Quarter Fender Applications (Q124 - Q130)

MQ2012

304 Stainless Steel 12 Gauge Perfect Mirror Finish
Single Axle, Half Tandem and Full Tandem Applications.
Quarter Fender Applications (M134 & Q134)

FM2012

304 Stainless Steel 11 Gauge Perfect
Mirror Finish Quarter, Half, Full,
Single and Trailer Applications

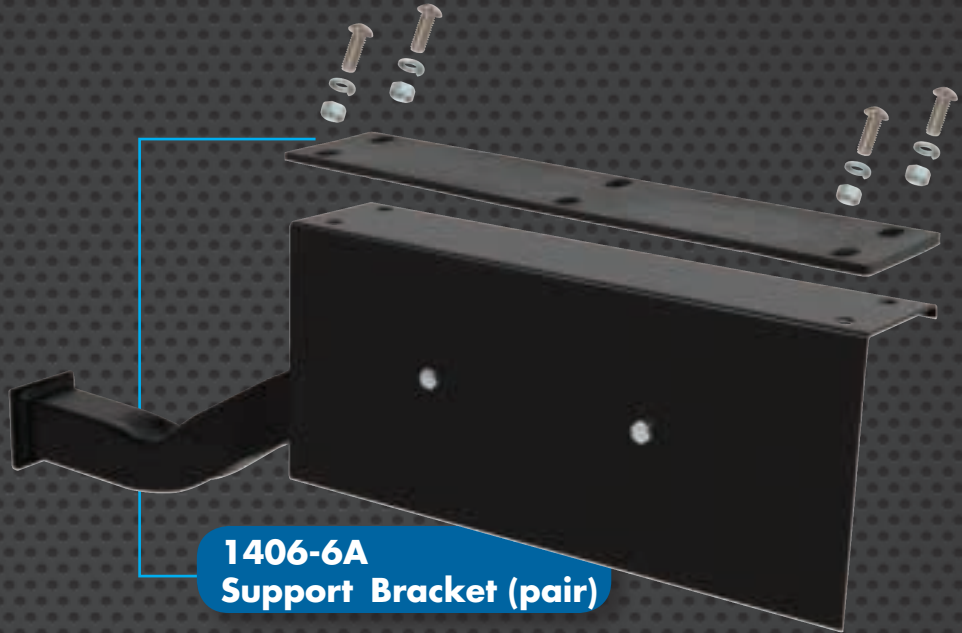


1633

28 inch arm, 304 Stainless Steel
Tube Mirror Finish, Quarter
Fender Applications

NOTE: You can order individual brackets or a complete kit.

**F-15
Vinyl Top Flap**



**1406-6A
Support Bracket (pair)**



**GR530
Freightliner Classic XL
(FLD-120)**

HOGEBUILT

THE ULTIMATE FINISH FOR TRUCKS

800.421.1589

[f](#) [ig](#) [yt](#) [in](#)

[WHAT'S NEW](#) [PRODUCTS ▾](#) [APPLICATIONS ▾](#) [GALLERY](#) [FAQ ▾](#) [ABOUT US](#) [CONTACT US](#) [FIND DEALER](#)

THE ULTIMATE LOW RIDER

PRODUCT SEARCH

Product Type

Applications

SS510HT
Half Tandem Fender

◆ ◆ ◆ ◆

ONLINE CATALOG

Offering a complete line of fenders manufactured from premium 304 mirror finish stainless steel.

[VIEW](#)

WATCH THIS

Find out what we can do for your rig.

Hogebuilt Video

[Watch later](#) [Share](#)

FIND A DEALER

From anywhere in the U.S. and Canada, there's a Hogebuilt dealer near you.

Visit Hogebuilt.com for products, specifications, watch videos, view our gallery and find a dealer near you.



ONLINE HOGEBUILT
www.hogebuilt.com



EMAIL HOGEBUILT
sales@hogebuilt.com
customerservice@hogebuilt.com



CALL HOGEBUILT
800-421-1589



FAX HOGEBUILT
800-421-1589



CLAIMS FOR SHORTAGES

- Shortages must be reported to Hogebuilt Customer Service in writing within four (4) working days from the carrier's delivery date. Customer is responsible for checking and reporting any errors at the time of delivery before signing the bill of lading. If no discrepancy is reported within the allotted time, Customer agrees that the BOL/Packing Slip contents were received as shipped.
- Claims for shortages must include the following information:
 - Invoice Number
 - Date of receipt
 - Carrier and PRO number

CLAIMS FOR DAMAGED MERCHANDISE

- All items are sold FOB Hogebuilt manufacturing plant, Springfield, TN. Ownership of the product is transferred to the customers at the point it leaves our facility. Hogebuilt packaging practices have been developed and standardized to protect product under normal transit conditions. Never-the-less, occasional damage occurs in transit.
- Product received and any signs of damage or distress must be identified on all copies of the receiving paperwork / BOL before the driver leaves your dock. Damage should be documented photographically and the product held "as is" for inspection by the carriers representative before processing further.
- Customer's sole recourse for reimbursement of damaged product cost is through the Carrier's freight claim process.
- Please contact Hogebuilt Customer Service for any required support or to suggest packaging improvements.

RETURN GOODS POLICY

- Material may be returned to Hogebuilt when a Return Material Authorization (RMA) number has been issued.
- Returns must be received by Hogebuilt within 30 days of receiving RMA number.
- Parts to be returned must have been purchased directly from Hogebuilt within the last 12 months. Proof of purchase is required.
- Parts purchased through a Dealer must be returned to that distributor. This includes drop shipped parts, as well.
- All return documentation should reference the original Hogebuilt invoice number.
- Parts must be in new and re-salable condition and should be in their original packaging.
- Customer is responsible for packaging parts for protection in transit.
- Damaged, rusted, repainted, used, reconditioned, altered or incomplete parts are not eligible for return.
- All material will be shipped freight pre-paid to the address provided on the RMA.
- Parts are subject to a standard 15% re-stocking fee. Additional fees may be assessed pending final inspection.
- Obsolete, custom or proprietary parts are not eligible for return.
- Annual return amount is limited to 5% of the prior year's purchases.

WARRANTY

- Hogebuilt warrants its parts and products against defects in workmanship and material for a period of one year from the date of purchase. Any claim not submitted within this period shall conclusively be deemed waived by the buyer. Buyer agrees to indemnify Hogebuilt against any claim(s) made by buyer's subsequent customers or assignees of the purchased product.
- Half tandem and full tandem fenders must be installed with Hogebuilt mounting brackets in order for the one year warranty to be valid.
- For warranty claims, please contact Hogebuilt Customer Service at 800-421-1589 or e-mail customerservice@hogebuilt.com.
- Repair or replacement will be made at Hogebuilt's discretion upon inspection of the goods. No orders are to be returned without expressed consent and direction of Hogebuilt.





HOGEBUILT

The Ultimate Finish for Trucks™®

784 Bill Jones Industrial Drive, Suite B | Springfield, TN 37172

Phone: 800-421-1589 | Fax 800-421-1589

sales@hogebuilt.com | customerservice@hogebuilt.com

HOGEBUILT.COM