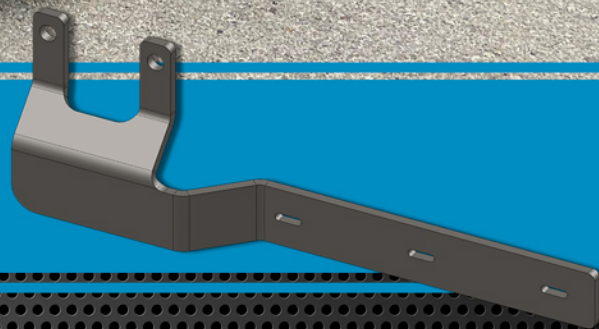




Down Low Half Tandem Fender Mounts



- Mounts lower and from behind unlike traditional mounts
- For use with Premium and Mid-Grade Low Rider and Ultimate Low Rider Fender
- Specific to Peterbilt & Kenworth Suspensions
- Reduced installation time
- Brackets can be purchased separately
- All inclusive mounting kits also available
- Standard One-Year Warranty

HOGEBUILT

THE ULTIMATE FINISH FOR TRUCKS



HOGEBUILT.COM | 800.421.1589

Premium Fender Options:

SS505HT - 31" Drop, Low Rider, 72" Overall Length

SS510HT - 35.5" Drop, Ultimate Low Rider, 80" Overall Length

Mid-Grade Fender Options:

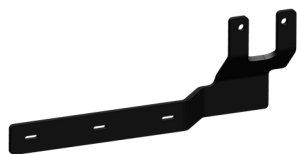
BA505HT - 31" Drop, Low Rider, 72" Overall Length

BA510HT - 35.5" Drop, Ultimate Low Rider, 80" Overall Length

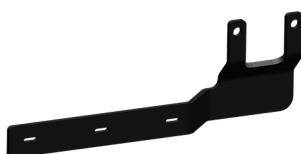
Down Low Mounting Kit Options:

Truck Make	Suspension	Tire Size	Year	Mounting Kit	Mounting Kit Includes:		
					Pass. (RH) Front Bracket	Driver (LH) Front Bracket	Rear Bracket
Peterbilt	Flex Air	Any 22.5 or 24.5	Any	2DL-KIT	17722DL	17732DL	1406-6A
Peterbilt	Low Air	22.5 (Low Pro)	2005+	4DL-KIT	17724DL	17734DL	1406-6A
Peterbilt	Low Air	22.5 (Tall Rubber)	2005+	4DL-KIT	17724DL	17734DL	1406-6A
Peterbilt	Low Air	24.5 (Low Pro)	2005+	4DL-KIT	17724DL	17734DL	1406-6A
Peterbilt	Low Air	11R-24.5 (Tall Rubber)	2005+	5DL-KIT	17725DL	17735DL	1406-6A
Peterbilt	Low Air	Any 22.5 or 24.5	Pre 2005	9DL-KIT	17729DL	17739DL	1406-6A
Kenworth	AG380	Any 22.5 or 24.5	Any	2DL-KIT	17722DL	17732DL	1406-6A
Kenworth	AG400L	22.5 (Low Pro)	Any	4DL-KIT	17724DL	17734DL	1406-6A
Kenworth	AG400L	22.5 (Tall Rubber)	Any	4DL-KIT	17724DL	17734DL	1406-6A
Kenworth	AG400L	24.5 (Low Pro)	Any	4DL-KIT	17724DL	17734DL	1406-6A
Kenworth	AG400L	11R-24.5 (Tall Rubber)	Any	5DL-KIT	17725DL	17735DL	1406-6A

Brackets can be purchased separately.



17722DL



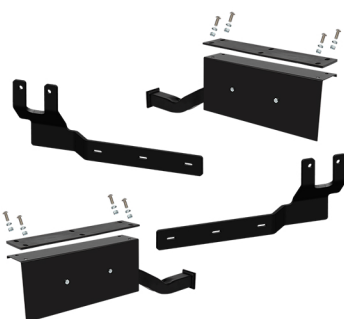
17724DL



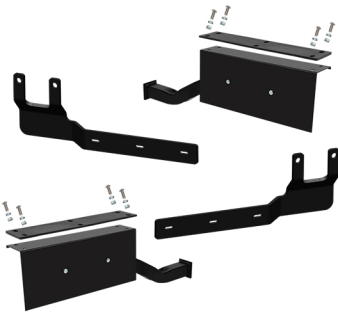
17725DL



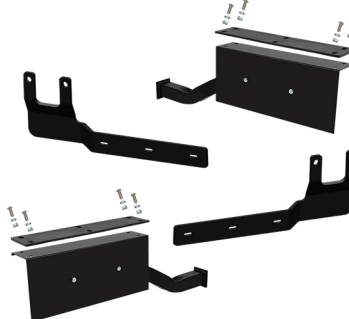
17729DL



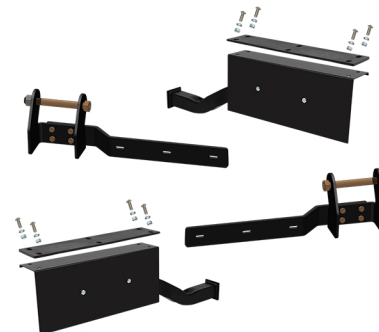
2DL-KIT



4DL-KIT



5DL-KIT



9DL-KIT

NOTICE: NOT DESIGNED FOR USE WITH STANDARD DROP HOGE BUILT FENDERS (SS500HT OR BA500HT)